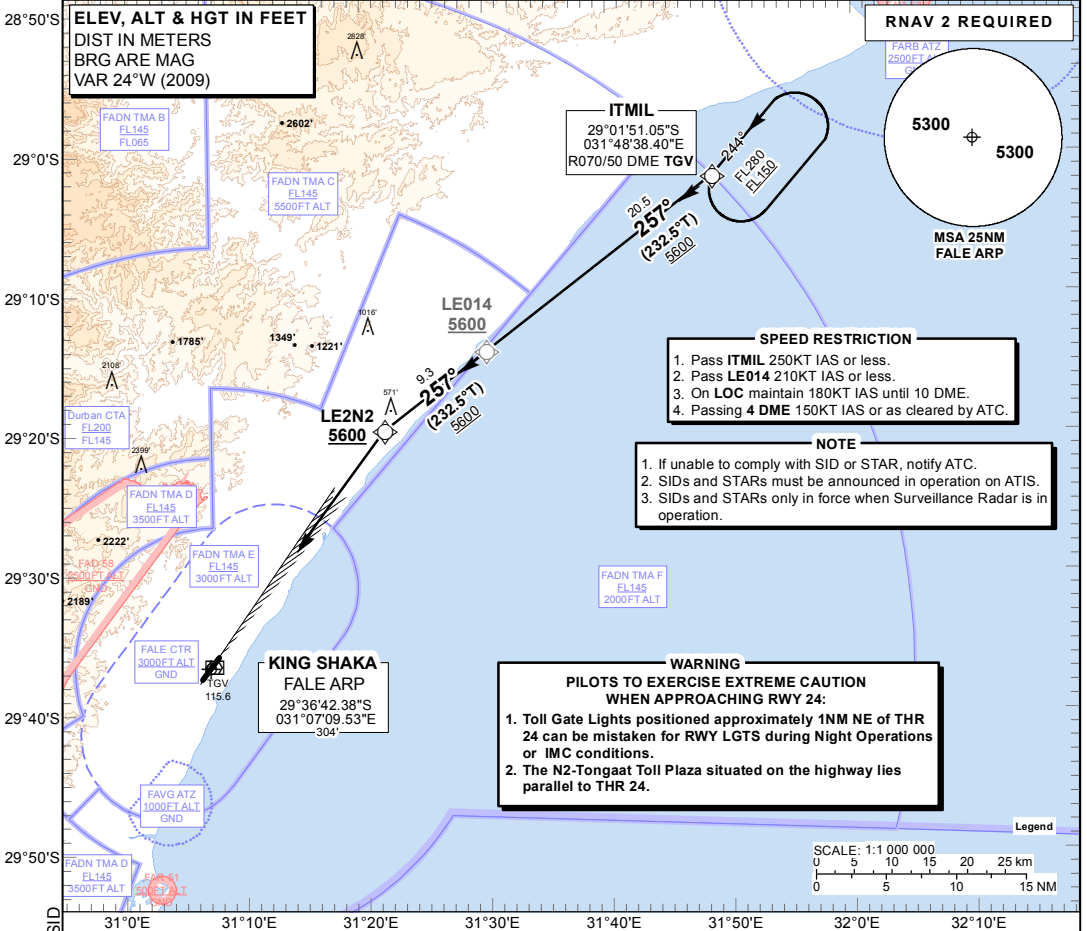


STANDARD ARRIVAL CHART - INSTRUMENT (STAR)

TRANSITIONAL ALTITUDE
5500'
TRANSITIONAL LEVEL
ATC

RADAR APP: 125.75
TWR: 118.45
GND: 121.65
ATIS: 127.00

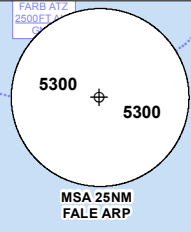
DURBAN
(KING SHAKA INTERNATIONAL)
RNAV (GNSS) RWY24
ITMIL 1B



ELEV, ALT & HGT IN FEET
DIST IN METERS
BRG ARE MAG
VAR 24°W (2009)

RNAV 2 REQUIRED

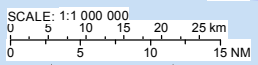
ITMIL
29°01'51.05\"S
031°48'38.40\"E
R070/50 DME TGV



- SPEED RESTRICTION**
1. Pass **ITMIL** 250KT IAS or less.
 2. Pass **LE014** 210KT IAS or less.
 3. On **LOC** maintain 180KT IAS until 10 DME.
 4. Passing **4 DME** 150KT IAS or as cleared by ATC.

- NOTE**
1. If unable to comply with SID or STAR, notify ATC.
 2. SIDs and STARs must be announced in operation on ATIS.
 3. SIDs and STARs only in force when Surveillance Radar is in operation.

- WARNING**
- PILOTS TO EXERCISE EXTREME CAUTION WHEN APPROACHING RWY 24:**
1. Toll Gate Lights positioned approximately 1NM NE of THR 24 can be mistaken for RWY LGTS during Night Operations or IMC conditions.
 2. The N2-Tongaat Toll Plaza situated on the highway lies parallel to THR 24.



CHANGE: Missed Approach Text - OKTAN 1A RNAV (GNSS) SID

ITMIL 1B: RWY 24

Leave ITMIL for LE2N2. At LE2N2 turn left and intercept the ILS LOC RWY 24.

COMMUNICATION FAILURE PROCEDURE (Squawk 7600)

Before ITMIL: Proceed to ITMIL and enter the ITMIL RNAV (GNSS) hold. Hold at last assigned level, for minimum 5 MIN, then descend to FL090 in the hold or maintain last assigned level if below FL090. Leave ITMIL on the "After ITMIL" Communication Failure Procedure.

After ITMIL: Continue on the ITMIL 1B RNAV (GNSS) STAR maintaining last assigned level. At LE014 descend to FL080. At LE2N2 (not below 5600' ALT) turn left and continue with the RNAV (GNSS) RWY APCH and intercept the ILS LOC RWY 24 and land RWY 24.

In the event of a missed approach with the intention of diverting to an alternate aerodrome, proceed as follows: Comply with the OKTAN 1A RNAV (GNSS) SID. At OKTAN continue to the diversion aerodrome.